

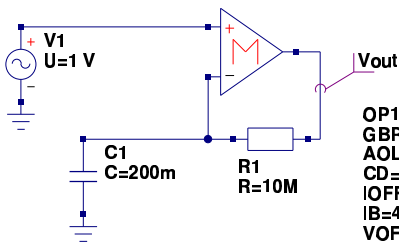
dc simulation

DC1

ac simulation

AC1

Type=log
Start=0.1Hz
Stop=10 MHz
Points=91



Equation

Eqn1

gain=dB(Vout.v)

phase=rad2deg(unwrap(angle(Vout.v)))

OP1

GBP=1e6
AOLDC=100.0
CD=1e-20
IOFF=20e-20
IB=48.3e-9
VOFF=3.74e-4

