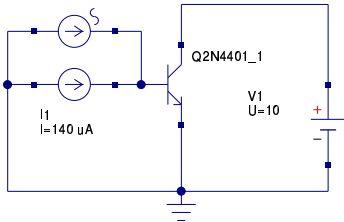


I2
I=1 uA



ac simulation

AC1
Type=log
Start=1 kHz
Stop=1 GHz
Points=101

dc simulation

DC1

Equation

Eqn1
 $ic = -V1.i$
 $beta = ic/ib$
 $ib = I2.I$

Equation

Eqn2
 $beta_dB = dB(ic/1e-6)$
 $ft = xvalue(beta_dB, 0)$