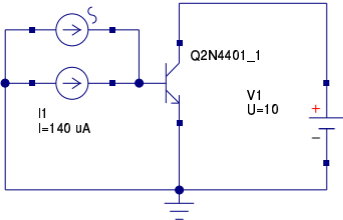


I2
I=1 uA
f=1 kHz



transient
simulation

TR1
Type=lin
Start=0
Stop=5 ms
Points=201

Equation

Eqn1
 $I_c = -V1.I_t$
 $Beta_{TR} = I_{cHat}/I2.I$
 $I_{cHat} = (\max(I_c) - \min(I_c))/2$

Equation

Eqn2
 $Beta_{DC} = -V1.I/I1.I$

dc simulation

DC1